

SAFETY DATA SHEET



MAXFORCE® FLEET

Version 1.0 / USA
102000031112

1/10
Revision Date: 04/10/2017
Print Date: 04/11/2017

SECTION 1: IDENTIFICATION OF THE SUBSTANCE/MIXTURE AND OF THE COMPANY/UNDERTAKING

Product identifier

Trade name MAXFORCE® FLEET
Product code (UVP) 84897086
SDS Number 102000031112
EPA Registration No. 432-1264

Relevant identified uses of the substance or mixture and uses advised against

Use Insecticide
Restrictions on use See product label for restrictions.

Information on supplier

Supplier Bayer Environmental Science
2 T.W. Alexander Drive
Research Triangle PK, NC 27709
United States
Responsible Department Email: SDSINFO.BCS-NA@bayer.com

Emergency telephone no.

Emergency Telephone Number (24hr/ 7 days) 1-800-334-7577
Product Information Telephone Number 1-800-331-2867

SECTION 2: HAZARDS IDENTIFICATION

Classification in accordance with regulation HCS 29CFR §1910.1200

This material is not hazardous under the criteria of the Federal OSHA Hazard Communication Standard 29CFR 1910.1200.

Hazards Not Otherwise Classified (HNOC)

No physical hazards not otherwise classified.
No health hazards not otherwise classified.

SECTION 3: COMPOSITION/INFORMATION ON INGREDIENTS

Hazardous Component Name	CAS-No.	Concentration % by weight
Fipronil	120068-37-3	0.001

SAFETY DATA SHEET



MAXFORCE® FLEET

Version 1.0 / USA
102000031112

2/10
Revision Date: 04/10/2017
Print Date: 04/11/2017

SECTION 4: FIRST AID MEASURES

Description of first aid measures

General advice	When possible, have the product container or label with you when calling a poison control center or doctor or going for treatment.
Inhalation	Move to fresh air. If person is not breathing, call 911 or an ambulance, then give artificial respiration, preferably mouth-to-mouth if possible. Call a physician or poison control center immediately.
Skin contact	Take off contaminated clothing and shoes immediately. Wash off immediately with plenty of water for at least 15 minutes. Call a physician or poison control center immediately.
Eye contact	Hold eye open and rinse slowly and gently with water for 15-20 minutes. Remove contact lenses, if present, after the first 5 minutes, then continue rinsing eye. Call a physician or poison control center immediately.
Ingestion	Call a physician or poison control center immediately. DO NOT induce vomiting unless directed to do so by a physician or poison control center. Rinse out mouth and give water in small sips to drink. Never give anything by mouth to an unconscious person. Do not leave victim unattended.

Most important symptoms and effects, both acute and delayed

Symptoms To date no symptoms are known.

Indication of any immediate medical attention and special treatment needed

Treatment Appropriate supportive and symptomatic treatment as indicated by the patient's condition is recommended. There is no specific antidote.

SECTION 5: FIREFIGHTING MEASURES

Extinguishing media

Suitable Water, Foam, Carbon dioxide (CO₂), Dry chemical

Unsuitable None known.

Special hazards arising from the substance or mixture Dangerous gases are evolved in the event of a fire.

Advice for firefighters

Special protective equipment for firefighters Firefighters should wear NIOSH approved self-contained breathing apparatus and full protective clothing.

Further information Fight fire from upwind position. Keep out of smoke. Cool closed containers exposed to fire with water spray. Do not allow run-off from fire fighting to enter drains or water courses.

Flash point 93.4 °C

SAFETY DATA SHEET



MAXFORCE® FLEET

Version 1.0 / USA
102000031112

3/10
Revision Date: 04/10/2017
Print Date: 04/11/2017

Auto-ignition temperature	No data available
Lower explosion limit	No data available
Upper explosion limit	No data available
Explosivity	Not explosive

SECTION 6: ACCIDENTAL RELEASE MEASURES

Personal precautions, protective equipment and emergency procedures

Precautions Keep unauthorized people away. Isolate hazard area. Avoid contact with spilled product or contaminated surfaces.

Methods and materials for containment and cleaning up

Methods for cleaning up Collect and transfer the product into a properly labelled and tightly closed container. Clean contaminated floors and objects thoroughly, observing environmental regulations.

Additional advice Use personal protective equipment. If the product is accidentally spilled, do not allow to enter soil, waterways or waste water canal.

Reference to other sections Information regarding safe handling, see section 7.
Information regarding personal protective equipment, see section 8.
Information regarding waste disposal, see section 13.

SECTION 7: HANDLING AND STORAGE

Precautions for safe handling

Advice on safe handling Use only in area provided with appropriate exhaust ventilation.

Advice on protection against fire and explosion Do not use this product in or on electrical equipment due to the possibility of shock hazard.

Hygiene measures Wash hands thoroughly with soap and water after handling and before eating, drinking, chewing gum, using tobacco, using the toilet or applying cosmetics.
Remove Personal Protective Equipment (PPE) immediately after handling this product. Remove soiled clothing immediately and clean thoroughly before using again. Wash thoroughly and put on clean clothing.

Conditions for safe storage, including any incompatibilities

Requirements for storage areas and containers Store in a cool, dry place and in such a manner as to prevent cross contamination with other crop protection products, fertilizers, food, and feed. Store in original container and out of the reach of children, preferably in a locked storage area.

SAFETY DATA SHEET



MAXFORCE® FLEET

Version 1.0 / USA
102000031112

4/10
Revision Date: 04/10/2017
Print Date: 04/11/2017

SECTION 8: EXPOSURE CONTROLS/PERSONAL PROTECTION

Control parameters

Components	CAS-No.	Control parameters	Update	Basis
Fipronil	120068-37-3	0.035 mg/m ³ (TWA)		OES BCS*
Sucrose	57-50-1	10 mg/m ³ (TWA)	02 2012	ACGIH
Sucrose (Respirable.)	57-50-1	5 mg/m ³ (REL)	2010	NIOSH
Sucrose (Total)	57-50-1	10 mg/m ³ (REL)	2010	NIOSH
Sucrose (Respirable fraction.)	57-50-1	5 mg/m ³ (PEL)	02 2006	OSHA Z1
Sucrose (Total dust.)	57-50-1	15 mg/m ³ (PEL)	02 2006	OSHA Z1
Sucrose (Total dust.)	57-50-1	15 mg/m ³ (TWA)	06 2008	TN OEL
Sucrose (Respirable fraction.)	57-50-1	5 mg/m ³ (TWA)	06 2008	TN OEL

*OES BCS: Internal Bayer AG, Crop Science Division "Occupational Exposure Standard"

Exposure controls

Personal protective equipment

In normal use and handling conditions please refer to the label and/or leaflet. In all other cases the following recommendations would apply.

Respiratory protection

Respiratory protection is not required under anticipated circumstances of exposure.

Hand protection

Chemical resistant nitrile rubber gloves

Eye protection

Safety glasses with side-shields

Skin and body protection

Wear long-sleeved shirt and long pants and shoes plus socks.

General protective measures

Follow manufacturer's instructions for cleaning/maintaining PPE. If no such instructions for washables, use detergent and warm/tepid water.
Keep and wash PPE separately from other laundry.

SECTION 9. PHYSICAL AND CHEMICAL PROPERTIES

Appearance light yellow

SAFETY DATA SHEET



MAXFORCE® FLEET

Version 1.0 / USA
102000031112

5/10
Revision Date: 04/10/2017
Print Date: 04/11/2017

Physical State	gel
Odor	sweet
Odour Threshold	No data available
pH	4.5 - 5.5 at 100 % (55 - 70 °C)
Vapor Pressure	No data available
Vapor Density (Air = 1)	No data available
Density	ca. 1.27 g/cm ³ at 20 °C
Evaporation rate	No data available
Boiling Point	No data available
Melting / Freezing Point	60 °C / 140 °F
Water solubility	soluble
Minimum Ignition Energy	Not applicable
Decomposition temperature	Not applicable
Partition coefficient: n-octanol/water	Not applicable
Viscosity	No data available
Flash point	93.4 °C
Auto-ignition temperature	No data available
Lower explosion limit	No data available
Upper explosion limit	No data available
Explosivity	Not explosive

SECTION 10: STABILITY AND REACTIVITY

Reactivity

Thermal decomposition	Not applicable
Chemical stability	Stable under normal conditions.
Possibility of hazardous reactions	No dangerous reaction known under conditions of normal use.

SAFETY DATA SHEET



MAXFORCE® FLEET

Version 1.0 / USA
102000031112

6/10
Revision Date: 04/10/2017
Print Date: 04/11/2017

Conditions to avoid	Extremes of temperature and direct sunlight. Exposure to moisture.
Incompatible materials	Strong bases, Strong acids, Strong oxidizing agents
Hazardous decomposition products	No decomposition products expected under normal conditions of use.

SECTION 11: TOXICOLOGICAL INFORMATION

Exposure routes Ingestion, Skin contact, Eye contact

Immediate Effects

Skin May be minimally irritating following prolonged direct contact.

Ingestion May be harmful if swallowed.

Information on toxicological effects

Acute oral toxicity LD50 (Rat) > 5,000 mg/kg

Acute inhalation toxicity
No data available

Acute dermal toxicity LD50 (Rat) > 5,000 mg/kg

Skin irritation slight irritation (Rabbit)

Eye irritation Minimally irritating. (Rabbit)

Sensitisation Non-sensitizing. (Guinea pig)

Assessment STOT Specific target organ toxicity – repeated exposure

Fipronil caused specific target organ toxicity in experimental animal studies in the following organ(s): Liver. Fipronil caused neurobehavioral effects and/or neuropathological changes in animal studies.

Assessment mutagenicity

Fipronil was not mutagenic or genotoxic in a battery of in vitro and in vivo tests.

Assessment carcinogenicity

Fipronil caused an increased incidence of tumours in rats in the following organ(s): Thyroid. The mechanism that triggers tumours in rodents and the type of tumours observed are not relevant to humans.

ACGIH

None.

NTP

None.

IARC

None.

SAFETY DATA SHEET



MAXFORCE® FLEET

Version 1.0 / USA
102000031112

7/10
Revision Date: 04/10/2017
Print Date: 04/11/2017

OSHA

None.

Assessment toxicity to reproduction

Fipronil caused reproduction toxicity in a two-generation study in rats only at dose levels also toxic to the parent animals. The reproduction toxicity seen with Fipronil is related to parental toxicity.

Assessment developmental toxicity

Fipronil did not cause developmental toxicity in rats and rabbits.

Further information

Acute toxicity studies have been bridged from a similar formulation(s).
The non-acute information pertains to the active ingredient(s).

SECTION 12: ECOLOGICAL INFORMATION

Toxicity to fish	LC50 (Oncorhynchus mykiss (rainbow trout)) 0.25 mg/l Exposure time: 96 h The value mentioned relates to the active ingredient fipronil.
Toxicity to aquatic invertebrates	EC50 (Daphnia magna (Water flea)) 0.19 mg/l Exposure time: 48 h The value mentioned relates to the active ingredient fipronil.
Toxicity to aquatic plants	EC50 (Desmodesmus subspicatus (green algae)) 0.068 mg/l Exposure time: 96 h The value mentioned relates to the active ingredient fipronil.
Biodegradability	Fipronil: Not rapidly biodegradable
Koc	Fipronil: Koc: 427 - 1278
Bioaccumulation	Fipronil: Bioconcentration factor (BCF) 321 Does not bioaccumulate.
Mobility in soil	Fipronil: Slightly mobile in soils
Environmental precautions	Do not allow to get into surface water, drains and ground water. Do not contaminate surface or ground water by cleaning equipment or disposal of wastes, including equipment wash water. Apply this product as specified on the label.

SECTION 13: DISPOSAL CONSIDERATIONS

Waste treatment methods

SAFETY DATA SHEET



MAXFORCE® FLEET

Version 1.0 / USA
102000031112

8/10
Revision Date: 04/10/2017
Print Date: 04/11/2017

Product	Follow container label instructions for disposal of wastes generated during use in compliance with the product label. Never place unused product down any indoor or outdoor drain.
Contaminated packaging	Do not re-use empty containers. Place empty container in trash. Follow advice on product label and/or leaflet.
RCRA Information	Characterization and proper disposal of this material as a special or hazardous waste is dependent upon Federal, State and local laws and are the user's responsibility. RCRA classification may apply.

SECTION 14: TRANSPORT INFORMATION

According to national and international transport regulations this material is not classified as dangerous goods / hazardous material.

SECTION 15: REGULATORY INFORMATION

EPA Registration No. 432-1264
US Federal Regulations
TSCA list
None.
US. Toxic Substances Control Act (TSCA) Section 12(b) Export Notification (40 CFR 707, Subpt D)
None.
SARA Title III - Section 302 - Notification and Information
None.
SARA Title III - Section 313 - Toxic Chemical Release Reporting
None.
US States Regulatory Reporting
CA Prop65
This product does not contain any substances known to the State of California to cause cancer.

This product does not contain any substances known to the State of California to cause reproductive harm.

US State Right-To-Know Ingredients
None.

Canadian Regulations
Canadian Domestic Substance List
None.

Environmental
CERCLA
None.
Clean Water Section 307 Priority Pollutants
None.

SAFETY DATA SHEET



MAXFORCE® FLEET

Version 1.0 / USA
102000031112

9/10
Revision Date: 04/10/2017
Print Date: 04/11/2017

Safe Drinking Water Act Maximum Contaminant Levels

None.

EPA/FIFRA Information:

This chemical is a pesticide product registered by the Environmental Protection Agency and is subject to certain labeling requirements under federal pesticide law. These requirements differ from the classification criteria and hazard information required for safety data sheets, and for workplace labels of non-pesticide chemicals. Following is the hazard information required on the pesticide label:

Signal word: Caution!

Hazard statements: May be harmful if swallowed.
Avoid contact with skin and clothing.
Keep exposed gel away from open food and food contact surfaces.
Wash thoroughly with soap and water after handling.

SECTION 16: OTHER INFORMATION

Abbreviations and acronyms

49CFR	Code of Federal Regulations, Title 49
ACGIH	US. ACGIH Threshold Limit Values
ATE	Acute toxicity estimate
CAS-Nr.	Chemical Abstracts Service number
CERCLA	Comprehensive Environmental Response, Compensation, and Liability Act
EINECS	European inventory of existing commercial substances
ELINCS	European list of notified chemical substances
IARC	International Agency for Research on Cancer
IATA	International Air Transport Association
IMDG	International Maritime Dangerous Goods
N.O.S.	Not otherwise specified
NTP	US. National Toxicology Program (NTP) Report on Carcinogens
OECD	Organization for Economic Co-operation and Development
TDG	Transportation of Dangerous Goods
TWA	Time weighted average
UN	United Nations
WHO	World health organisation

NFPA 704 (National Fire Protection Association):

Health - 1 Flammability - 1 Instability - 0 Others - none

HMIS (Hazardous Materials Identification System, based on the Third Edition Ratings Guide)

Health - 1 Flammability - 1 Physical Hazard - 0 PPE -

0 = minimal hazard, 1 = slight hazard, 2 = moderate hazard, 3 = severe hazard, 4 = extreme hazard

Reason for Revision: New Safety Data Sheet.

SAFETY DATA SHEET



MAXFORCE® FLEET

Version 1.0 / USA

102000031112

10/10

Revision Date: 04/10/2017

Print Date: 04/11/2017

Revision Date: 04/10/2017

This information is provided in good faith but without express or implied warranty. The customer assumes all responsibility for safety and use not in accordance with label instructions. The product names are registered trademarks of Bayer.



Maxforce®

FLEET™

FOR USE IN COMMERCIAL, INDUSTRIAL
AND RESIDENTIAL AREAS

ACTIVE INGREDIENT: Fipronil* 0.001%

OTHER INGREDIENTS: 99.999%

TOTAL: 100.000%

CAS NO. 120068-37-3

EPA Reg. No. 432-1264

EPA Est. No. 071106-GA-003

**STOP - READ THE LABEL BEFORE USE.
KEEP OUT OF REACH OF CHILDREN**

CAUTION

See Back Panel for Complete Precautionary Statements and Directions for Use.

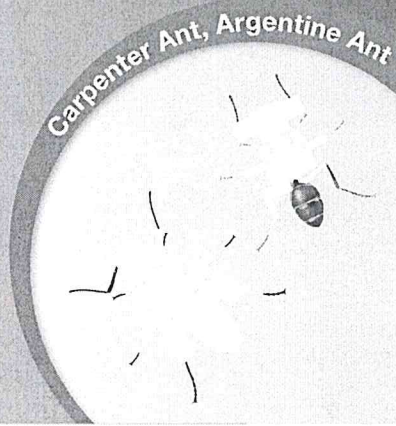
For **MEDICAL** and **TRANSPORTATION** Emergencies **ONLY**
Call 24 Hours A Day 1-800-334-7577

For **PRODUCT USE** Information Call 1-800-331-2867

Contents: 4 Reservoirs
27g (0.95 Oz) each
Total Net Weight: 108g (3.8 Oz)

85363883

85429949B 170112AV3



Product provides FAST CONTROL of ants in 3-5 days. Maxforce Fleet™ is formulated to effectively control ants, because this product contains Fipronil, a fast-acting ingredient. Its speed is still slow enough, however, giving ants to return to the colony and feed the bait to the queen(s) so that the entire colony is killed in the Domino Effect®.

Product is formulated for effective ant control. The high re content of this gel enhances the bait's veness to target ants. The bait's attractiveness is it within two weeks of application. This product is a roduct, formulated to take advantage of ant axis. Through trophallaxis, worker ants eat the bait oraging, then feed it to the rest of the colony. The digest the solid bait and produce a liquid containing onil that is fed to the rest of the colony and queen(s). oduct controls a broad spectrum of ants. Thus this t not only controls Carpenter Ants, but it also controls nal ants including Argentine, Pharaoh, Pavement, Acrobat, Odorous House, Thief, Big-headed, Id, and Field.

Apply gel into cracks and crevices. Place applicator tip into cracks and crevices and where ants may travel. Apply gel (up to 1 gram) per spot. Apply bait in small amounts between different elements of construction, openings leading into voids and hollow spaces in floors, walls, ceilings, equipment legs and bases, around plumbing pipes, doors and windows, cabinets, sinks, stoves and other places where ants may enter the establishment. During follow-up visits inspect bait placements and reapply when necessary. Do not apply bait to areas where food/feed, food utensils or food processing surfaces may become contaminated. Do not apply bait in cracks and crevices of areas that are routinely washed, tops of tables, food/feed preparation and prepared food/feed holding surfaces as bait may be removed by washing. Do not apply bait to surfaces where the temperature exceeds 120° F as bait may run. Examples include, but are not limited to. Portions of stoves, ovens, grills, fume hoods, heat lamps, coffee urns, steam tables, toasters, fryers, dishwashers and hot water pipes. Care should be taken to avoid depositing gel onto exposed surfaces. If gel contacts an exposed surface, remove it and wash exposed surface.

If you have recently sprayed, remove the dead ants and thoroughly clean the area before applying the gel.

4. Place the bait as follows: Gel can be placed in cracks, crevices, corners and any out of the way place, such as under and behind kitchen appliances, along baseboards, under sinks, in pantry, around pipes and water heater, window and door frames, and in the garage, attic, or crawl space.

REFILLABLE STATIONS: Maxforce Fleet may be placed into refillable bait stations designed for interior or exterior/perimeter use; when placing bait in the station, do not exceed the capacity of the station's reservoir. Close bait station securely after application. During follow up visits inspect placements and reapply as needed. For best results, place stations near ant trails, nest sites, where ants are actively foraging or suspected areas of ant activity. Stations may also be placed along fence lines and property lines to intercept foraging ants entering the property.

FOR INDOOR USE: Visually inspect for ants and place bait in areas of known or suspected ant activity. Place bait along foraging trails and into nest sites. A careful inspection will help to identify sites suitable for bait placement. Apply bait in small spots or beads into cracks, crevices, holes or other small openings where ants travel including: wall voids, cracks and crevices in kitchen, bathroom under sink, window sills, screen vents, garage, attic, and crawl spaces. Do not treat food preparation surfaces.

OUTDOOR USE: Place gel outdoors into, on or adjacent to structures where you see ants, next to ant trails and suspected areas of ant activity. Likely locations for ants and gel placements are points of entry into structure and areas with potential water damage including eaves, soffits, weep holes, where wires and pipes come into the building structure, trees, stumps, roots, wood decks, fences, planter boxes, woodpiles, landscaping, and railroad ties. Extreme heat or cold, direct sunlight and water may reduce the residual effectiveness. Pest population reduction will be apparent within a week.

FIRST AID	
<p>POISONED:</p> <ul style="list-style-type: none"> • Call a poison control center or doctor immediately for treatment advice. • Have person sip a glass of water if able to swallow. • Do not induce vomiting unless told to do so by the poison control center or doctor. • Do not give anything by mouth to an unconscious person. 	
<p>the product container or label with you when going to a poison control center or doctor or going for medical treatment. You may also contact 1-800-334-7577 for agency medical treatment information.</p>	

'RECAUTIONARY STATEMENTS FOR HUMANS AND DOMESTIC ANIMALS

CAUTION

harmful if swallowed. Avoid contact with skin and eyes. Keep exposed gel away from open foods and food preparation surfaces. Wash hands thoroughly after handling.

PHYSICAL AND CHEMICAL HAZARDS

use this product in or on electrical equipment where possibility of shock hazard exists.

DIRECTIONS FOR USE

violation of Federal Law to use this product in a manner inconsistent with its labeling. Application rate is dependent on level of infestation and must be controlled. Bait should be applied as spots.

PRECAUTIONS IN FOOD/FEED HANDLING ESTABLISHMENTS:

Do not apply gel into cracks and crevices. Place applicator tip into cracks and crevices and where ants may travel. Apply gel (up to 1 gram) per spot. Apply bait in small amounts between different elements of construction, openings leading into voids and hollow spaces in floors, walls, ceilings, equipment legs and bases, around plumbing pipes, doors and windows, cabinets, sinks, stoves and other places where ants may enter the establishment. During follow-up visits inspect bait placements and reapply when necessary. Do not apply bait to areas where food/feed, food utensils or food processing surfaces may become contaminated. Do not apply bait in cracks and crevices of areas that are routinely washed, tops of tables, food/feed preparation and prepared food/feed holding surfaces as bait may be removed by washing. Do not apply bait to surfaces where the temperature exceeds 120° F as bait may run. Examples include, but are not limited to. Portions of stoves, ovens, grills, fume hoods, heat lamps, coffee urns, steam tables, toasters, fryers, dishwashers and hot water pipes. Care should be taken to avoid depositing gel onto exposed surfaces. If gel contacts an exposed surface, remove it and wash exposed surface.

Food/feed areas include areas for receiving, storage packing (canning, bottling, wrapping, boxing), preparing edible waste for storage, and enclosed processing systems (mills, dairies, edible oils, syrups). Serving areas are also considered a food area when food is exposed and facility is in operation. Application of this product in food/feed areas of food/feed handling establishments after then as a crack and crevice instrument is not permitted.

DIRECTIONS FOR USING THE MAXFORCE BAIT INJECTOR, LOADING RESERVOIRS AND OPERATION:

With the teeth of the drive rod facing up, pull the drive rod all the way back. Attach ant gel reservoir to the bait injector with a twist-locking movement. Remove the reservoir outlet cap and attach the dispensing tip. Push the drive rod until the drive plunger seats against the piston in the reservoir of gel. Turn drive rod knob until teeth are facing down. Gently squeeze the trigger until the gel flows out. Reservoirs that still contain gel can be sealed with the end cap for future use.

DIRECTIONS FOR CHANGING RESERVOIRS:

With the arrow on the drive rod pointing up, pull the drive rod out as far as it will go. Remove the empty reservoir, wrap and place in trash can. Reservoirs that still contain gel can be sealed with the outlet cap for future use. To attach a new reservoir of gel follow the above directions.

1. To apply gel: Remove cap from tip, touch tip to surface and depress plunger. Recap after use.
2. Apply gel in spots in cracks and crevices. For best results, place many spots or dabs of gel where you see ants foraging and entering the structure.
3. Do not apply the gel to areas which have been recently sprayed with insecticide or contaminated with foggers and do not spray insecticide over gel as this may cause the bait to become repellent. Do not apply gel to areas

STORAGE AND DISPOSAL

Do not contaminate water, food or feed by storage or disposal.

PESTICIDE STORAGE: Store in a cool, dry area out of reach of children.

PESTICIDE DISPOSAL: If Empty: Do not reuse container. Place in trash or offer for recycling if available.

If Partly Filled: Call your local solid waste agency for disposal instructions. Never place unused product down any indoor or outdoor drain.

For questions or comments about MAXFORCE, call toll-free 1-800-331-2867.



Maxforce FLEET™

NOTE: Do not remove this label. Use only in areas not easily accessible to children or pets.
DISPOSAL: Wrap used reservoirs in several layers of newspaper and discard in trash.
ACTIVE INGREDIENT: Fipronil* 0.001%
OTHER INGREDIENTS: 99.999%
TOTAL: 100.000%
 AS NO. 120068-37-3
 PA Reg. No. 432-1264
 EA Est. No. 071106-GA-003

May be harmful if swallowed. Avoid contact with skin and clothing. Keep exposed gel away from open foods and food contact surfaces. Wash hands thoroughly after handling.
 May stain textiles and clothing.

KEEP OUT OF REACH OF CHILDREN
CAUTION
SEE PACKAGE FOR COMPLETE DIRECTIONS AND PRECAUTIONS

Net Weight
 1g (0.05 Oz)
 S363863
 S333461B 170112AV3

Produced for:
 Bayer Environmental Science
 A Division of Bayer CropScience LP
 5000 Centerville Way, Suite 400
 Cary, NC 27513
 Product of China

Bayer

For questions or comments about MAXFORCE™, call toll free 1-800-331-2867